

Outdoor Recreation Portfolio

WMF

WEBER MURPHY FOX

ARCHITECTURE INTERIORS CONSTRUCTION MANAGEMENT

LAND PLANNING & DEVELOPMENT HISTORIC PRESERVATION

WEBER MURPHY FOX CAPABILITIES STATEMENT: **OUTDOOR RECREATION**

Outdoor Recreation & Open Space Assets

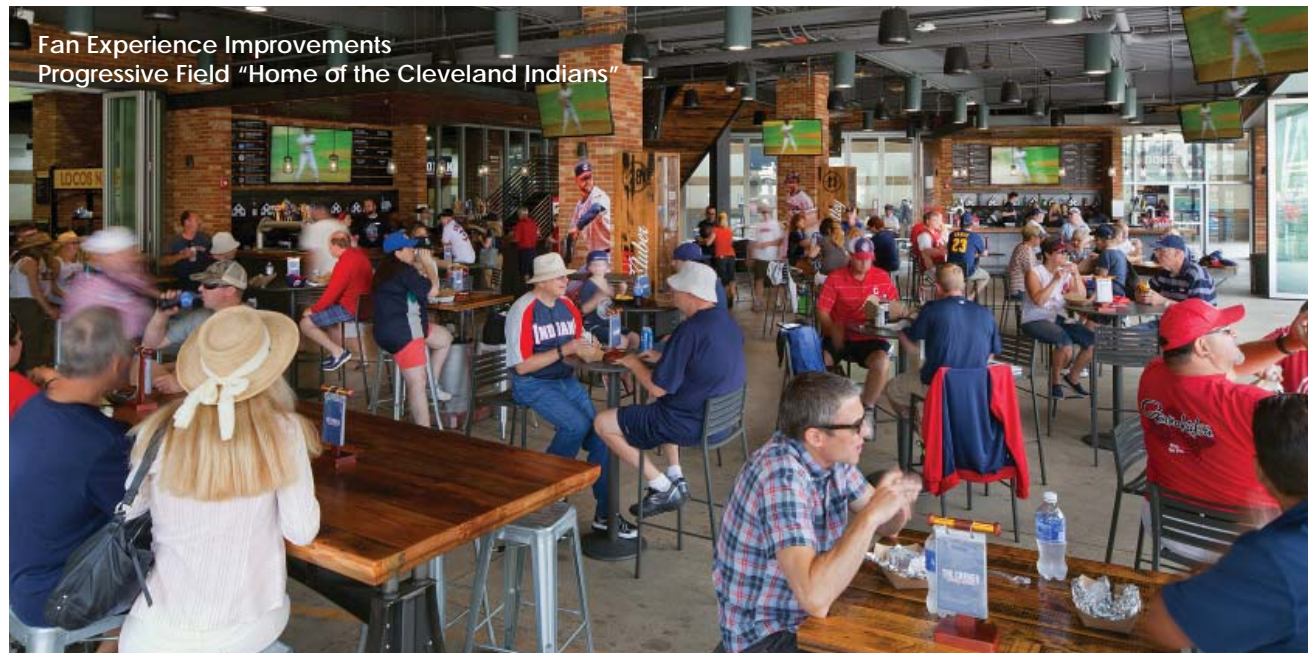
Outdoor recreation is fun. People hike, bike, ride horses, drive off-road vehicles, picnic, camp, hunt, fish, enjoy winter sports, navigate waterways, view wildlife and scenery, and explore historic places.

Outdoor recreation also provides physical challenge, requires development of life-long skills, provokes interest and inquiry, and inspires wonder, respect and awe of the natural world. It contributes to the physical, mental, and spiritual health of individuals, bonds family and friends, instills pride in their heritage, and provides economic benefits to communities.

Outdoor activities and facilities are quality of life attractions that need to be recognized, stimulated, and supported in order to thrive. At WMF, we provide a systematic decision-making process essential to conserving open space assets and designing amenities that sustain and expand the benefits of quality open space opportunities.

"The Borough has worked with WMF staff Robert Lingenfelter.... for approximately three years. The Borough of Bellefonte found the services provided by WMF to be outstanding...and would certainly recommend their services."

Donald L. Holderman
Assistant Borough Manager
Bellefonte Borough



Core Competencies

WMF is a professional services corporation providing design and construction management services. Our core competencies include:

- Planning
- Programming
- Architecture
- Interior Design
- Landscape Architecture
- Construction Management
- Historic Preservation

Resources

Our staff is comprised of the following disciplines:

- Architects
- Landscape Architects
- Interior Designers
- Technical Production
- BIM Manager
- Construction Project Managers
- Project Coordinators
- Field Superintendents
- Estimators
- Administration

For More Information Please Contact

Robert Lingenfelter, ASLA, APA, LEED AP BD+C, Senior Associate
mobile: 814.574.5014
direct: 814.206.0982
rlingenfelter@wmf-inc.com
www.wmf-inc.com



WMF
WEBER MURPHY FOX

ARCHITECTURE INTERIORS CONSTRUCTION MANAGEMENT
LAND PLANNING AND DEVELOPMENT HISTORIC PRESERVATION
CLEVELAND ERIE STATE COLLEGE

Leadership

Robert Lingenfelter, ASLA, APA, LEED AP BD+C

Robert plays a leading role in WMF's Land Planning & Development department. He is a planner, landscape architect, and Senior Associate with the firm. Robert's specialty is planning and designing open space system amenities with a particular focus on parks & recreation, urban design, outdoor learning environments, and ecologically sustainable plant use.

Proper design and management of open space is good for us, for nature and for the bottom line. Robert is particularly interested in understanding and building upon the complex interrelationships of built and green environments, the unique contribution that the natural environment makes to the quality of life, and the importance of the role that landscape architects play as stewards of the environment. Robert has contributed his career 'to a viable, sustainable integration of natural and cultural communities'.

Robert frequently presents papers at regional conferences. Some of his most recent presentations include:

Lingenfelter, R. (2015). *Connecting with Nature: Open Space Assets and Native Landscapes*. Paper presented at AIA Continuing Education Session – HSW course number C0671502A, Erie, PA.

Lingenfelter, R., & Coulter, T. (2013). *Connecting with Nature: Open Space Assets and Edible Landscapes*. Paper presented at American Society of Landscape Architects, PA – DE Chapter Annual Meeting, Rehoboth Beach, DE.

Lingenfelter, R. (2011). *Economic Benefits of Natural, Historic, and Cultural Resources*. Paper presented at Borough sponsored public presentation Introduction to Leveraging Historic Resource, Redevelopment and Heritage Tourism in Your Community, Bellefonte, PA



Representative Client List

- Allegheny College
- Bellefonte Borough
- Bethel Park High School
- City of Erie
- City of Titusville
- Cleveland State University
- Edinboro University of Pennsylvania
- Erie Zoological Park and Botanical Gardens
- Glenwood Park YMCA
- Holiday Valley Resort
- Holimont Ski Resort
- Lake Erie Arboretum at Frontier Park
- Oil Region Alliance of Business, Industry and Tourism
- Penn State Altoona
- Penn State Behrend
- Penn State Harrisburg
- Penn State University Park
- Tussey Mountain Resort
- Western Pennsylvania Port Authority

Geographic Reach

Operating out of three offices, WMF is licensed and positioned to engage in the Mid-Atlantic and Midwest. Our offices are located in:

- Cleveland, Ohio
- Erie, Pennsylvania
- State College, Pennsylvania

OUTDOOR RECREATION & OPEN ASSETS PORTFOLIO



*Standing Stones at the Highlands
Edinboro University*



*Tanney Field
Bellefonte Borough*



*Adler Athletic Complex
Penn State Altoona*



*Synthetic Turf Athletic Fields
Bethel Park High School*



*Liberty Park
Erie, Pennsylvania*

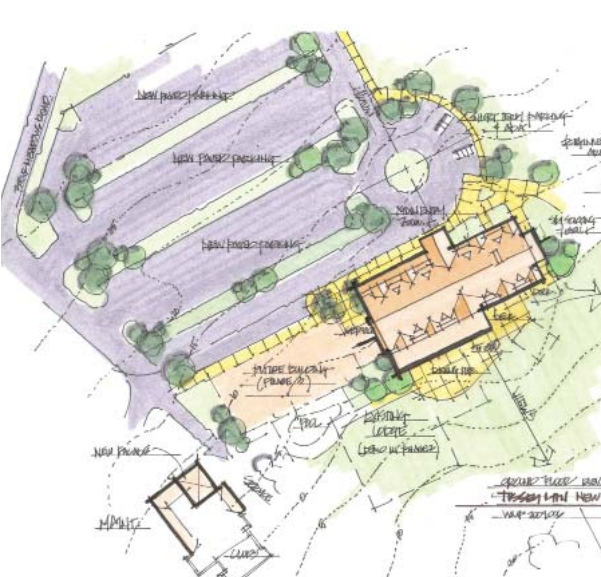


*Outdoor Learning Environment
PennMont Academy*

OUTDOOR RECREATION & OPEN ASSETS PORTFOLIO



Campus Recreation Master Plan
Ohio State University Mansfield



Resort Master Plan
Tussey Mountain Resort



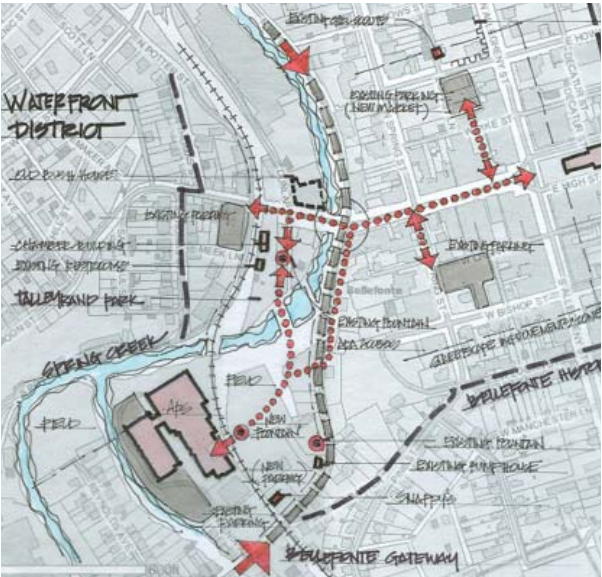
Talleyrand Park
Bellefonte, Pennsylvania



Rossman Park
Penn State Altoona



Yodeler Lodge
Holiday Valley Resort



Waterfront District Study
Bellefonte, Pennsylvania



WEBER MURPHY FOX

ARCHITECTURE INTERIORS CONSTRUCTION MANAGEMENT
LAND PLANNING & DEVELOPMENT HISTORIC PRESERVATION

CLEVELAND

1801 E. 9th Street
Suite 1500
Cleveland, Ohio 44114
216-623-3700

ERIE

3230 West Lake Road
Erie, Pennsylvania 16505
814-836-1515

STATE COLLEGE

403 South Allen Street
Suite 115
State College, Pennsylvania 16801
814-867-3508

www.wmf-inc.com

Vision: Do GREAT Work

*We strive to be your firm of choice, offering
a diverse palette of innovative, integrated
professional services.*

Our goal is to perform with excellence.